

WHAT IS ACRYLIC?

Acrylic canvas is a synthetic woven material, supplied in a range of finishes, designed to excel in outdoor applications. A highly technical but natural canvas appearance makes this fabric perfectly suited to withstand the rigours of the outside and marine environment. Solution Dyed Acrylic is the most colour stable cloth available with the highest UV resistance.

USES:

The Sauleda range of marine acrylic fabrics deliver proven performance against all outside conditions, with its resistance to water, air permeability, dimensional and UV stability coupled with the large range of colours, making it the perfect fabric choice for your cover maker to use to protect both yourself and your craft from the elements.

Over the years we have supplied Acrylic Canvas to a wide range of industries and applications. Acrylic Canvas is ideally suited for use in the marine environment and perfectly designed for use in biminis, enclosures, stack packs, dodgers, sprayhoods and all types of boat covers.

Sauleda Acrylic Canvas is also the premier fabric of choice for Aircraft Covers, Sunshades, Garden Shading and Seating, the list is endless, you can use Acrylic Canvas in so many applications the only restriction is your imagination!

Since 1983, Kayospruce have supplied and are still supplying most of the cover and sailmakers in Europe and our products can be found gracing some of the highest profile yachts and motorboats.

The Premier Acrylic Canvas by Sauleda

- Unsurpassed colour stability
- Outstanding colour choice
- High resistance to sunlight & outside conditions
- Maximum efficiency against putrefying agents
- Maximum resistance to tearing due to stretching
- Maximum resistance to atmospheric pollution
- Permits passage of air
- Weather resistant to extreme temperature
- Tightly woven finish with traditional appearance
- High pick count

CARING FOR ACRYLIC

Sauleda Acrylic Canvas is manufactured and designed to withstand the harshness of the marine environment. There are, however, a few simple steps you can take to help the fabric last and prolong its appearance over the course of its life:

Hose down regularly with fresh water and if needed a gentle brush to help remove any surface dust or dirt, this prevents any dirt becoming ingrained in the weave of the fabric.

For more ingrained dirt or stains use warm water, below 30 degrees, and soft soap solution, ensuring you rinse any soap from the fabric thoroughly after cleaning.

WINTERISING

Before placing your cover into storage it should be dried and cleaned to prevent mould and mildew. Please don't wash your covers using a jet or pressure washer as the pressure of the water can damage the yarns and strips the fabric of its strength and water proofing.

Do not use any Chlorine or Bleach based products as these may discolour or damage the yarns, and please do not tumble dry or iron the acrylic, allow it to dry naturally. For the best results we recommend re-proofing your fabric after cleaning, many commercial organisations and products exist on the market, please ask your sail or cover maker for their recommendations.

GUARANTEE

We are so confident in our product that we offer a 5 year warranty on the fabric.



SAULEDA

Sauleda have been weaving and dyeing fabrics in Spain since 1897 and are one of the oldest and most respected textile makers in Europe. Woven from the finest yarns and coloured with the most stable dyes, Sauleda Acrylic is the product developed from this wealth of experience in the production of technical textiles.

Since 1995, Sauleda have operated their own spinning mill enabling them to directly control the manufacturing process and quality. Although the company is now approaching 115 years old, they are continually upgrading their weaving looms and technology to ensure they operate the most modern equipment available.



SAULEDA AND KAYOSPRUCE  
A GREAT PARTNERSHIP

Our goal

To protect and take care of people so they can enjoy their leisure time.

We are pioneers

We were the first and we continue to innovate.  
Our commitment: to anticipate the needs of consumers.

A human company, orientated at people

Sauleda is comprised of all those who work in its organisation and all those who buy its products. Our objective? To come closer to them.

We are experienced

Our broad experience in the sector allows us to control the entire production chain. We respond to the results of our fabrics because we control the whole manufacturing process.

Specialists in the most demanding sectors

Our fabrics rise to the challenges of industrial sectors with extremely high technical standards.

R+D+I. In constant movement

We conduct research, we develop and we innovate.

Dual responsibility: towards society and the environment

We apply production protocols that show respect for the environment and comply with the sustainability standards.

We forge alliances with only the best

Sauleda maintains strict control over its suppliers, in order to work with those who offer a full quality guarantee.

The largest collection in the market

Colours, fashion, ranges, tones and designs that offer solutions for each consumer. We have the largest product catalogue in the market and we continue to design.

Certified, controlled quality

Sauleda hold all the European certificates and recognitions. Quality is our greatest objective and we leave nothing to chance. ISO-9001:2008

Technology at the service of protection and personal safety

All our plant production lines are automated and fitted with the latest technologies. Sauleda considers that technology is its tool. Protection and safety are our objectives.

ACRYLIC  
CANVAS



**Sauleda**  
1897

Kayospruce and Sauleda have been working in partnership developing acrylic canvas for the outdoor market since 1983. It is a partnership based on the shared desire to provide the best possible fabrics and service.

The leading supplier of high performance materials and accessories for the marine and leisure industries



Marine and Technical Products



FINISHES

Sauleda Acrylic canvas is available in three finish types and we recommend you seek advice from your cover maker/sailmaker for the most suitable finish for your application. Regardless of the finish all of the options use the same 300 gr/m2 base cloth and solution dyed yarns for maximum UV stability.

Acrylic Canvas: Uncoated

The uncoated canvas features a fluorocarbon impregnation treatment. It is water resistant to 360 mm but still retains some breathability. This is predominantly suitable where some protection from the elements is required whilst still allowing some moisture and dampness to pass through. Uses are not limited to sail covers, dodgers, awnings, canvas barriers, lee cloths and covers.

Technical characteristics		
Fabric	Masacril® Acrylic solution dyed	
Yarns	Warp	31 h/cm (Nm 34/2)
	Weft	15 h/cm (Nm 34/2)
Tensile Strength	Warp	140 daN/5 cm
	Weft	95 daN/5 cm
Weight	310 gr/m²	
Water repellent	360 mm	
Finish	Sauleda Fabric Protector	
Length of rolls	50 m	
Width	153 cm 60"	

Acrylic Canvas: Grey PVC Backed

The PVC Coating increases the water resistance to over 1000mm which makes for an almost 100 % waterproof barrier, this coating makes the fabric suitable for applications where you require a high level of water resistance whilst maintaining a traditional canvas appearance. The grey PVC pigment helps to improve the light reflection and is used in smaller covers such as inland waterway cratch covers.

Acrylic Canvas: PU Coated

The special resin coating adds a barrier layer to the underside of the acrylic canvas increasing its water column rating to 1000mm plus, but naturally reducing the air permeability. The PU Coating is the most popular of finishes supplied into the marine market, with its main use being Sprayhoods, Biminis and Enclosures.

Technical characteristics		
Fabric	Masacril® Acrylic solution dyed	
Yarns	Warp	31 h/cm (Nm 34/2)
	Weft	15 h/cm (Nm 34/2)
Tensile Strength	Warp	140 daN/5 cm
	Weft	95 daN/5 cm
Weight	330 gr/m²	
Water repellent	1000 mm	
Finish	Sauleda Fabric Protector	
Length of rolls	50 m	
Width	153 cm 60"	

Features

Sauleda Nautic Sea Star offers an outstanding performance covering the wide range needs of the nautical sector.

5 years warranty

The warranty covers abnormal deterioration of the fabric fibre and colour provided there is normal exposure to the sun and atmospheric agents in general. Please consult the warranty terms in [www.sauleda.com](http://www.sauleda.com).

Maintenance:

- Eliminate dirt by gently brushing or vacuuming the fabric.
- Occasionally use a water and soft soap solution to clean the fabric (maximum water temperature 30°C).
- Apply to the fabric and then rinse with running water.
- Let the fabric dry completely.
- Do not use solvents or abrasive detergents.

Barrier effect

All our acrylic fabrics have been impregnated with SAULEDA FABRIC PROTECTOR. This creates a barrier effect and reinforces the water-repellent properties of the fabric. Furthermore, it delays the adherence of dirt to the fabric.

It is important to know that agents such as acid rain or bird excrements, and washing the fabric with abrasive products may damage the SAULEDA FABRIC PROTECTOR coating.

Kayospruce Limited  
Marine and Technical Fabrics




2 Cockerell Close | Segensworth West,  
Fareham | Hampshire | England | PO15 5SR

Tel: +44 (0)1489 581 696

[info@kayospruce.co.uk](mailto:info@kayospruce.co.uk)  
[www.kayospruce.com](http://www.kayospruce.com)

KAYOSPRUCE AGENT



WIDTH	Uncoated	PU Coated	PVC Backed
120 cm / 47" 153 cm 60"			



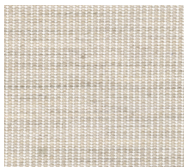
Cloud White  
ACCW15



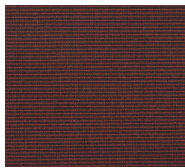
White  
ACWH15



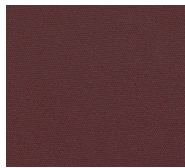
Vanilla  
ACVAN15



Shell  
ACSH15



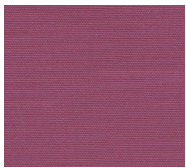
Red Tweed  
ACRT15



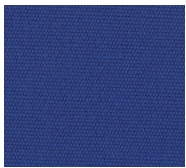
Burgundy  
ACBU15



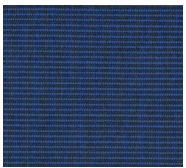
Deep Red  
ACDR15



Pink  
ACPI15



Dark Blue  
ACDB15



Blue Tweed  
ACBT15



Navy  
ACNA15



Commodore Navy  
ACCN15



Ivory  
ACIV15



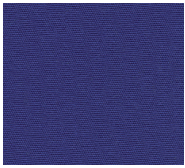
Pebble Beige  
ACPB15



Linen  
ACLI15



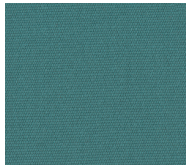
Off White  
ACOW15



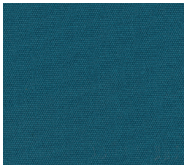
Purple  
ACPU15



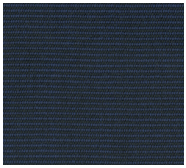
Plum  
ACPL15



Aqua  
ACAQ15



Jade  
ACJA15



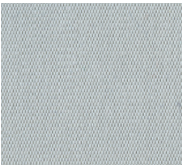
Midnight Blue Tweed  
ACBM15



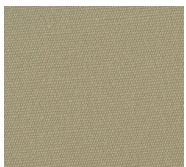
Armada Blue  
ACAB15



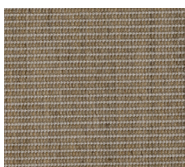
Admiral Navy  
ACAN15



Silver  
ACSI15



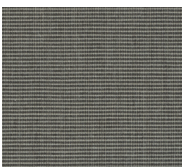
New Beige  
ACBN15



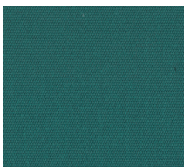
Toast  
ACTO15



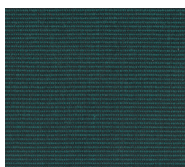
Hemp Beige  
ACHB15



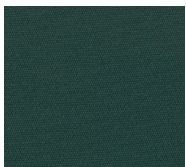
Linen Tweed  
ACLT15



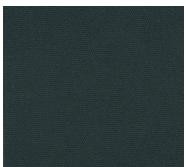
Emerald Green  
ACEG15



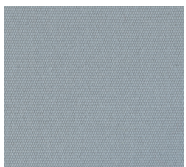
Green Tweed  
ACGT15



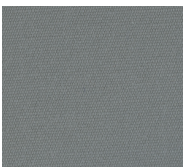
Bottle Green  
ACBG15



Racing Green  
ACRG15



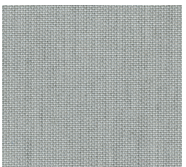
Perla  
ACPE15



Grey  
ACGY15



Metal Grey  
ACMG15



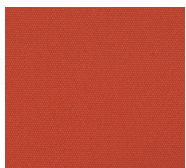
Quartz  
ACQU15



Yellow  
ACYE15



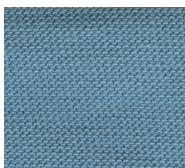
Orange  
ACOR15



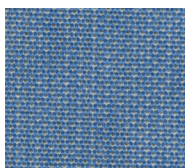
Bright Red  
ACRB15



Mid Red  
ACMR15



Glacier  
ACGL15



Jeans  
ACJE15



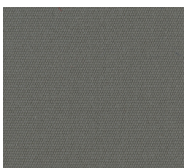
Denim Blue  
ACDE15



Ocean  
ACOE15



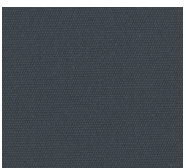
Grey Tweed  
ACGYT15



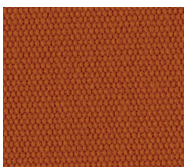
Taupe  
ACTA15



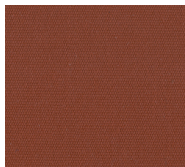
Graphite  
ACGR15



Dark Grey  
ACDG15



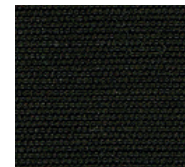
Apricot  
ACAP15



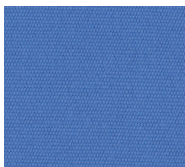
Rust  
ACRU15



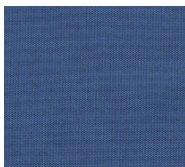
Brown  
ACBR15



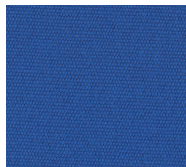
Cafe  
ACCA15



Indigo  
ACIN15



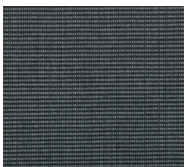
Riviera Blue  
ACRI15



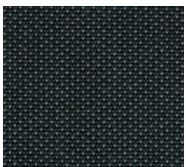
Mid Blue  
ACMB15



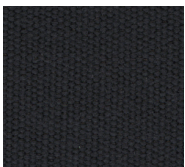
Atlantis  
ACAT15



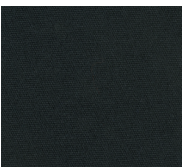
Black Tweed  
ACBKT15



Coal  
ACCO15



Carbon  
ACCAR15



Black  
ACBK15

